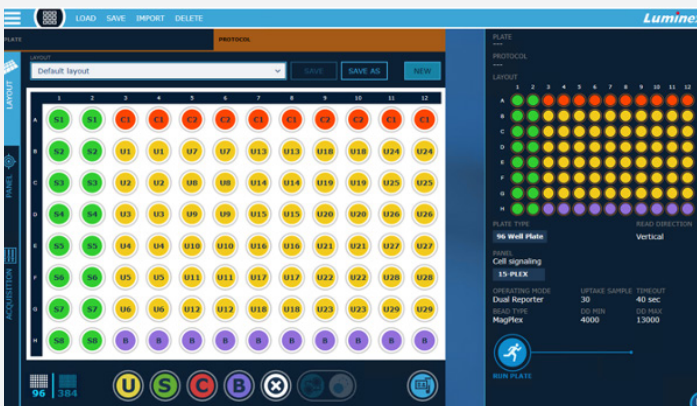


Key Differences Between xMAP INTELLIFLEX[®] Software and xPONENT[®] Software

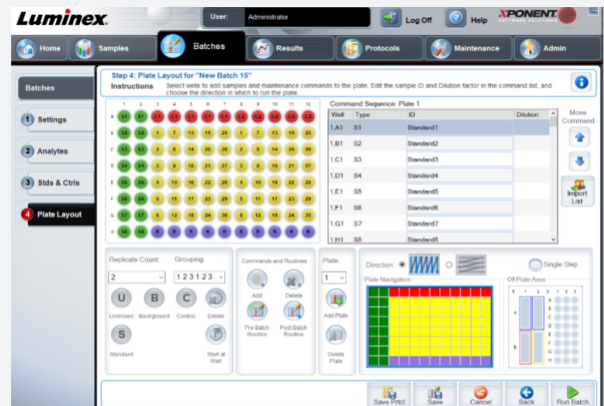
xMAP INTELLIFLEX[®] Software is a unique software package designed with exciting new tools that are flexible, customizable, and easy to learn and use. The software incorporates workflow enhancements not previously available on older xMAP[®] software packages marketed under the xPONENT[®] name. Here, we've provided a comparison of some of the key differences between xMAP INTELLIFLEX[®] Software and xPONENT[®] Software.

Figure 1. Plate Configuration

xMAP INTELLIFLEX[®]



xPONENT[®]

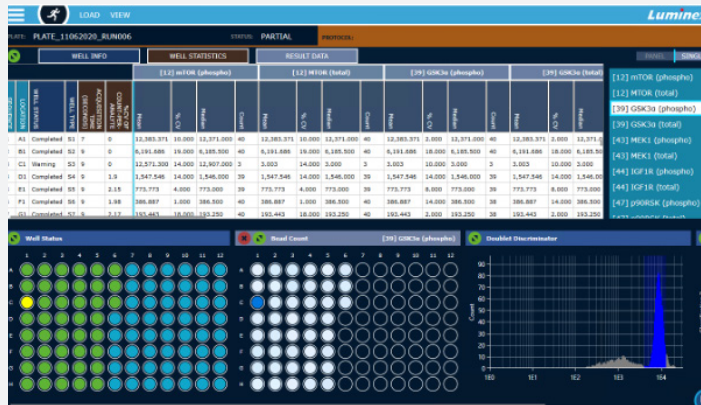


xMAP INTELLIFLEX uses an intuitive, non-linear workflow, supporting the import of independent panels, plate layouts, and sample lists, and allowing the user to assemble plates from modular components.

xPONENT uses a fixed, linear workflow—some elements are importable, but users must package all acquisition parameters into a single protocol template prior to acquisition.

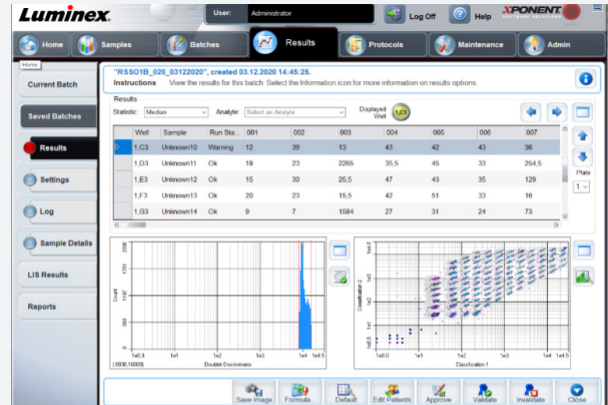
Figure 2. Run Monitoring

xMAP INTELLIFLEX®



xMAP INTELLIFLEX allows the user to concurrently view multiple statistics for all analytes. Combined with added heat map visualizations, rapid insights into run performance are available in real time.

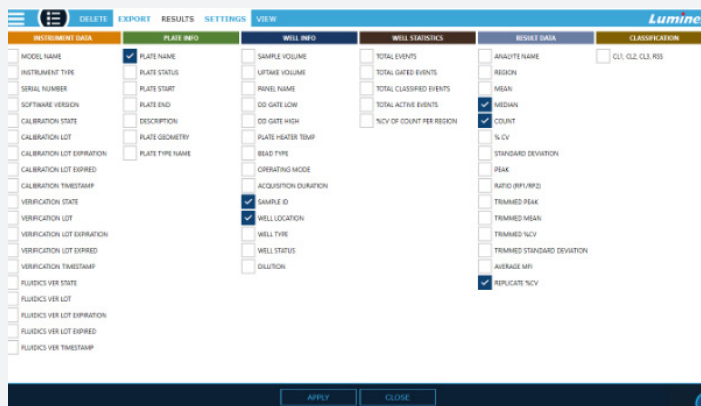
xPONENT®



xPONENT allows the user to view either a single statistic or analyte during a run and provides histogram and bead classification map visualizations.

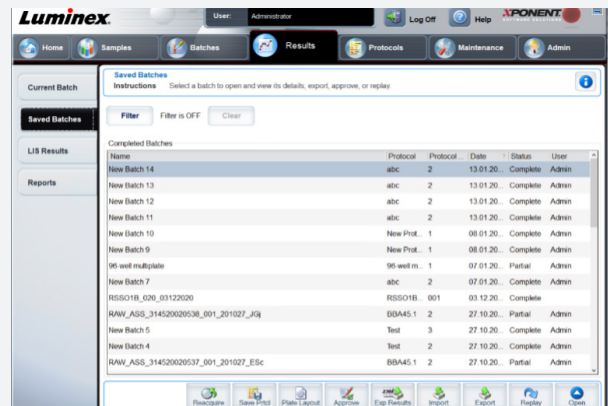
Figure 3. Results

xMAP INTELLIFLEX®



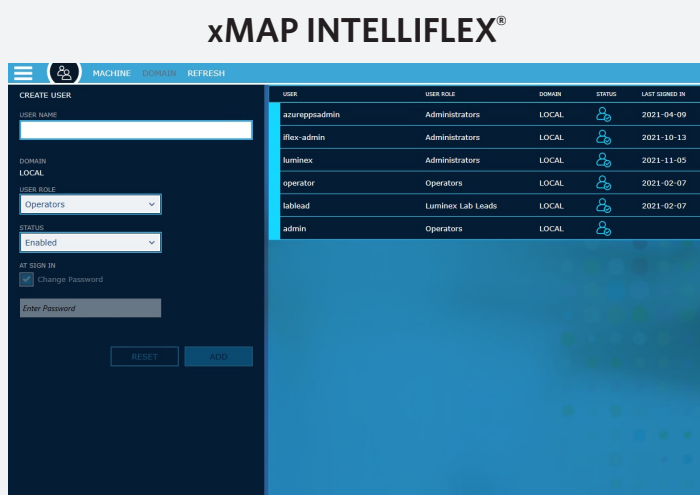
xMAP INTELLIFLEX supports the xPONENT data output format for compatibility with existing xMAP analysis tools, as well as a new, easy-to-interpret xMAP INTELLIFLEX-native format which can be easily customized.

xPONENT®

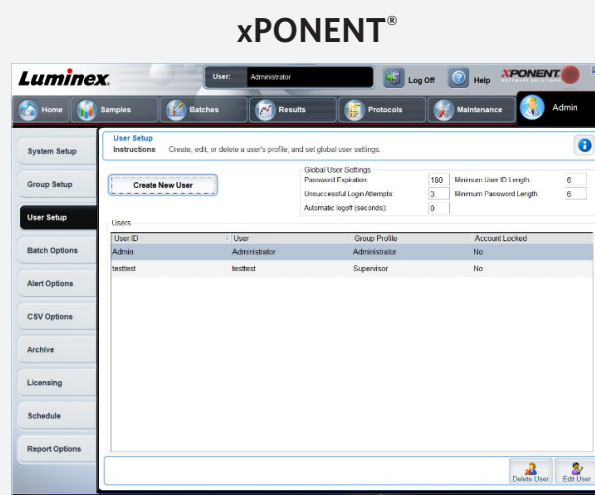


xPONENT provides a single, non-customizable data output format.

Figure 4. Security

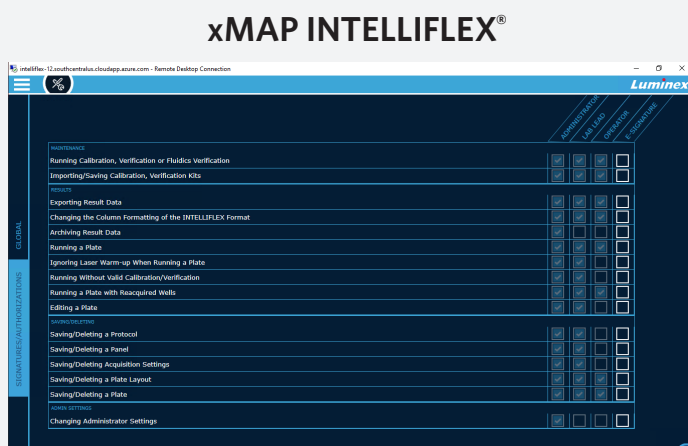


xMAP INTELLIFLEX supports multiple users: users may be configured either locally (for non-networked installations) or may be defined on the network and managed by IT departments.



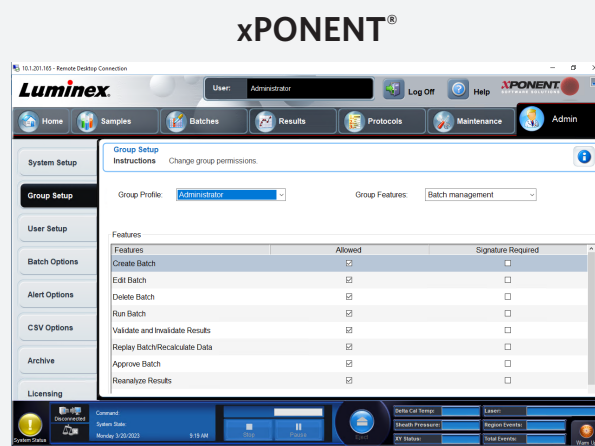
xPONENT only supports multiple users if the optional Security module (not included with base-level xPONENT installations) is enabled. Users may only be configured locally, within the xPONENT application itself.

Figure 5. Compliance and Automation



xMAP INTELLIFLEX offers two optional software modules: The Electronic Records Compliance module enables rich tools to support 21 CFR Part 11 and Annex 11-compliant workflows, such as electronic signatures, digitally signed data outputs and the ability to export audit records in the same file as fluorescent results.

The Automation module enables an integration-friendly REST/OpenAPI programming interface.



xPONENT offers similar functionality in two optional modules: The 21 CFR Part 11 module provides basic electronic signing features.

The Automation module provides a .NET API to support remote automation commands.

Luminex[®]
A DiaSorin Company

For more information, please visit luminexcorp.com/INTELLIFLEX.

For Research Use Only. Not for use in diagnostic procedures. Please contact Luminex at support@luminexcorp.com to obtain the appropriate product information for your country of residence.

©2023 Luminex Corporation. A DiaSorin Company. All rights reserved. Luminex, xMAP, xMAP INTELLIFLEX, and xPONENT are trademarks of Luminex Corporation, registered in the US and other countries.

HEADQUARTERS

UNITED STATES

+1 512 219 8020

info@luminexcorp.com

EUROPE

+31 73 800 1900

europe@luminexcorp.com

CANADA

+1 416 593 4323

info@luminexcorp.com

CHINA

+86 21 8036 9888

infocn@luminexcorp.com

JAPAN

+81 3 5545 7440

infojp@luminexcorp.com

FL407434